

AIR-SS-2

Aerial-Mounted Snow Sensor



FEATURES

- Reduced energy consumption with automatic snow melting.
- Slim design minimizes visual impact.
- Mounts on $\frac{3}{4}$ " PVC or $\frac{1}{2}$ " PVC with optional reducing bushing or $\frac{1}{2}$ " NPT with included fittings.
- Operates on safe low voltage power.
- Simple 3 wire connections, 2 power, one signal.
- Drop in replacement for WarmlyYours AIR-SS aerial sensor.
- Convenient power-on self-test to verify proper sensor operation.
- Housing made with ASA UV-resistant plastic that was formulated by the auto industry for exterior plastic trim.
- **Made in the USA**

SPECIFICATIONS

Dimensions	Height: 3.75" Diameter: 1.75"
Input Power	24 V AC 50/60 Hz or 24V DC or 24V full wave rectified AC/ Pulsed DC 0.2A max
Output	Relay Contacts: 2 Amps max, 30 V
Hold On Time	Set 1 minute
Operating Temperature	-40°C to +85°C (-40°F to +185°F)
Temperature Set Point	38°F
Storage Temperature	-40°C to +85°C (-40°F to +185°F)

SAFETY

Make all electrical connections in compliance with the National Electrical Code (NFPA 70) and the local electrical code.

ABNORMAL ODOR OR SMOKE

In the event of smoke, a burning odor or abnormal odor, immediately interrupt power to the unit by unplugging the unit or by turning off the circuit breaker protecting the unit

ELECTRICAL SHOCK / FIRE HAZARD

As a low voltage control the AIR-SS-2 has a maximum current load of 2 amps resistive for 24 VAC and presents little hazard of electrical shock or fire. The AIR-SS-2 is intended to control higher voltage / current heating circuits which can present such hazards so care must be taken when using the sensor for these applications. This product is intended for residential or light commercial applications. Any installation involving electric heaters must be grounded to earth to protect against shock and fire hazard. Use a suitably sized ground fault detection and interruption system to reduce shock and fire hazard and to protect equipment. Wiring

to heating elements must be installed in accordance with the National Electrical Code (NEC) requirements and all other local and applicable electrical codes and any third party standards. Follow the installation instructions contained in this manual and those provided by the heater manufacturer.

Use a GFEP (Ground Fault Equipment Protection) circuit breaker on each branch circuit connected to the ice melting system. Clearly label each circuit breaker with its function. This is vitally important when there is more than a single point of disconnect. Size the circuit breaker in accordance with the size of the maximum expected load.

Make certain that the heater shield is properly grounded. Failure to do so may result in electrical shock, damage to equipment or fire. The AIR-SS-2 performs an internal self test when the power is first turned on. During the first 10 seconds of power up the sensor will turn on its output for a short time and engage

any contactor that is connected to it. ***For this reason care should be taken to ensure that heater power is either connected properly or that it is turned off/ disconnected before powering up the sensor.***

Following installation and prior to beginning system operation refer to and perform the post-installation tests described in this manual.

THEORY OF OPERATION

The AIR-SS-2 sensor monitors atmospheric conditions to determine when a snow/ freezing rain event occurs and responds by providing a grounded output to the control circuit or contactor which in turn will enable the heating system.

It does this by using the snowflake shaped moisture sensor on the top cap to melt the snow/ ice that lands on it and then detects the resulting water using a low voltage current. The detection of water alone will not provide an output but is used in combination with a temperature reading below 38~ F. An Internal processor looks for this combination or moisture and temperature and triggers the output only when both conditions are present. This allows the AIR-SS-2 to trigger a heat cycle only when it is needed. Once the AIR-SS-2 has triggered it will remain on until one or both of the stimuli is removed, and it determines that the stimuli remains missing for the next 4 minutes.

INSTALLATION INSTRUCTIONS

With user supplied hardware, mount the AIR-SS-2 securely in an upright position (sensor snowflake at top) in a clear and open area typical of the area to be melted, either above the roof line or removed from the building in an area exposed to falling snow.

- Avoid overhead trees, shrubs, wires, eaves, etc., and falling or blowing debris.
- Avoid vehicle and foot traffic. Avoid creating a tripping or safety hazard.
- Avoid exposure to artificial heat sources and excessive shock and vibration.
- Position the sensor at a height to reduce, eliminate or discourage damage caused by animals or vandals.

Install in accordance with the requirements of all applicable electrical and building codes and regulations. Ensure that all conduit and cable terminations are watertight.

NEC Article 426.28 requires equipment ground fault protection (GFEP) for ice and snow melting equipment. This functionality is not provided as part of this sensor and must be provided as part of the overall system.

The AIR-SS-2 can be mounted at a distance up to 500 feet away from the controller or contactor using 22-gauge wires and up to 1000 feet using 18 gauge wires.

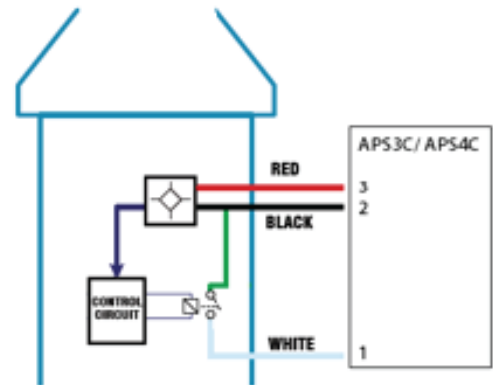
Once the AIR-SS-2 has been mounted in the desired location it can be connected to the controller or contactor.

POWER ON SELF TEST PRE-INSTALLATION TEST

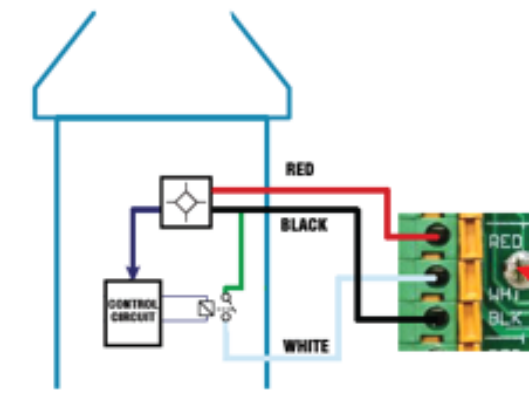
The AIR-SS-2 performs an internal self test when the power is first turned on. During the first 10 seconds of power up the sensor will turn on its output and engage any contactor that is connected to it for a short time. For this reason care should be taken to ensure that heater power is either connected properly or that it is turned off/ disconnected before powering up the sensor. If the sensor gives a continuous ON-OFF-ON-OFF output then this is an indication of a bad sensor. As a pre installation test the POST can be run simply by powering the unit and observing the output.

INSTALLATION DIAGRAMS

The following diagrams show the AIR-SS-2 and AIR-SS drop in installations.

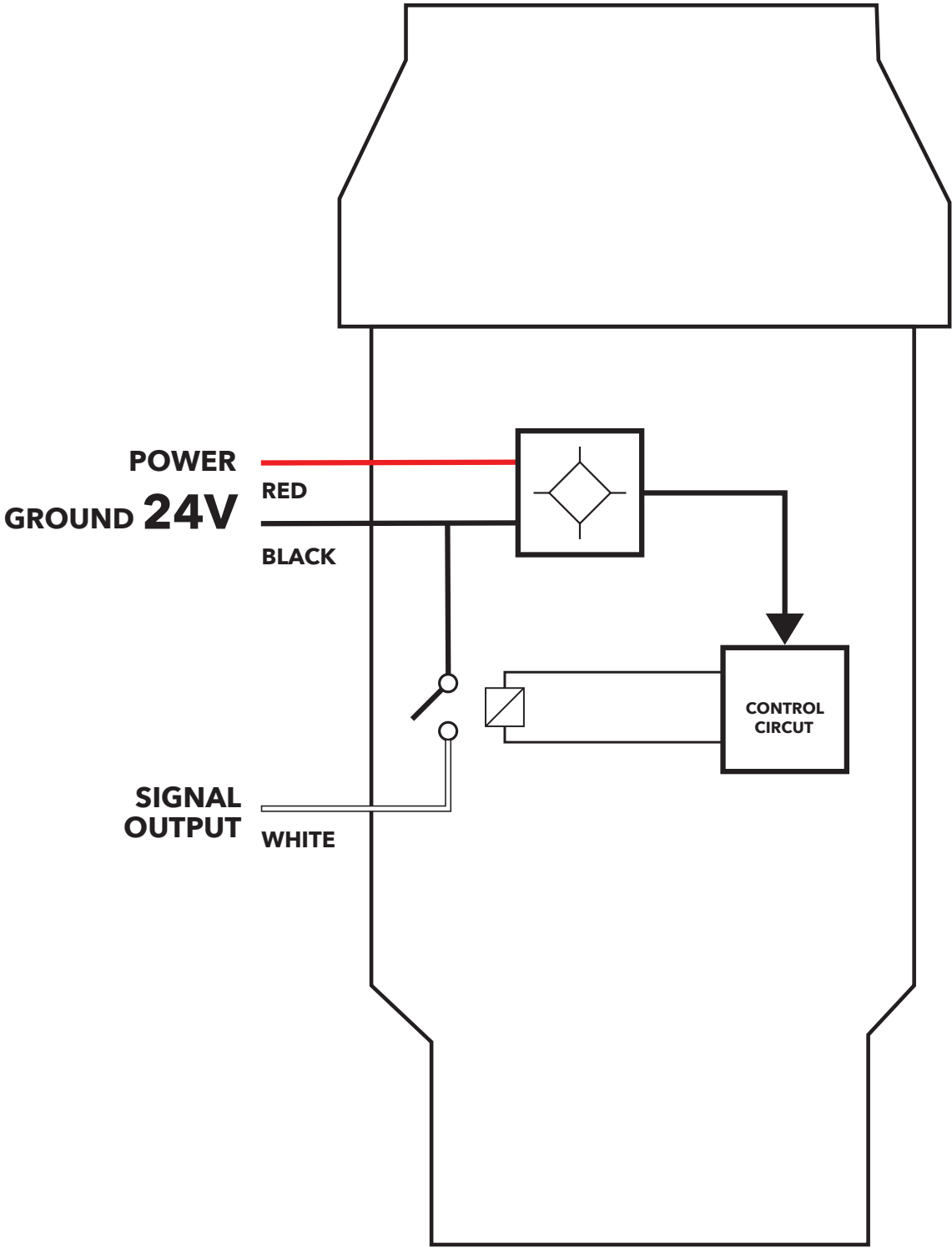


SCP-120/AIR-SS Drop in Replacement



SCA-DUAL/AIR-SS Drop in Replacement

QUICK-REFERENCE INSTALLATION GUIDE



TESTING AFTER INSTALLATION

After installation the sensor can be tested by cooling the sensor base with either ice (**do not immerse the sensor in ice water, it is not water proof.**) or freeze mist. Locate the internal temperature sensor by first locating the indexing tab (in the red circle in picture below) and apply the mist to the base of the sensor on the opposite side of the indexing tab.

Once the unit is cooled continue by placing a drop of water on the moisture grid. If testing in the winter and the temperature is below 3.3°C (38°F) then simply placing a drop of water or a small amount of snow on the moisture grid will start a heating cycle. To stop the cycles simply turn off the power for 5 to 10 seconds and then turn it back on.

LIMITED WARRANTY

WarmlyYours 2-year limited warranty covering defects in workmanship and materials applies. Contact your Account Manager for complete warranty information.



Important Notice for Québec Consumers:

WarmlyYours does not provide repair services for this product. The only replacement parts available are splice kits for snow melting cables and mats; no spare parts are available for snow melting controls. If your snow melting system (cables, mats, or controls) fails within the warranty period, we will replace the entire unit according to our warranty policy. Our technical support team is available 24/7 by phone for installation and troubleshooting assistance. For full details, see our Return Policy. This notice is provided in accordance with Québec's Consumer Protection Act, section 39 (as amended in 2025).

Avis important pour les consommateurs du Québec :

WarmlyYours n'offre pas de services de réparation pour ce produit. Les seules pièces de rechange disponibles sont les kits de raccordement (splice kits) pour les câbles et les tapis de déglacage ; aucune pièce de rechange n'est offerte pour les contrôleurs (snow melting controls). Si votre système de déglacage (câbles, tapis ou contrôleurs) tombe en panne pendant la période de garantie, nous remplacerons l'unité complète conformément à notre politique de garantie. Notre équipe d'assistance technique est disponible 24h/24 et 7j/7 par téléphone pour toute aide à l'installation ou au dépannage. Pour plus de détails, consultez notre politique de retour. Cet avis est fourni conformément à la Loi sur la protection du consommateur du Québec, article 39 (telle qu'amendée en 2025).