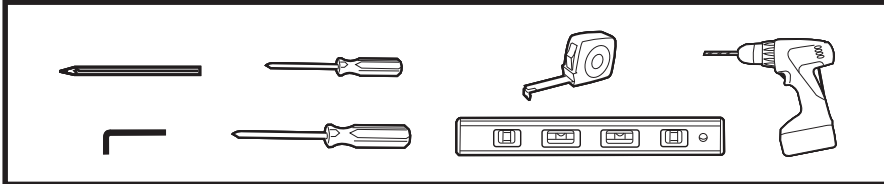




TOOLS REQUIRED

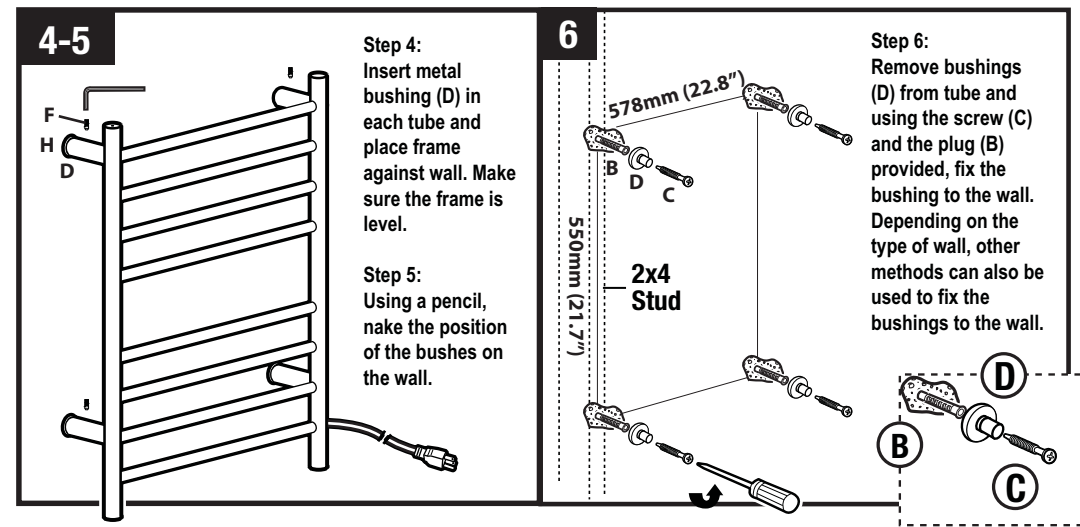
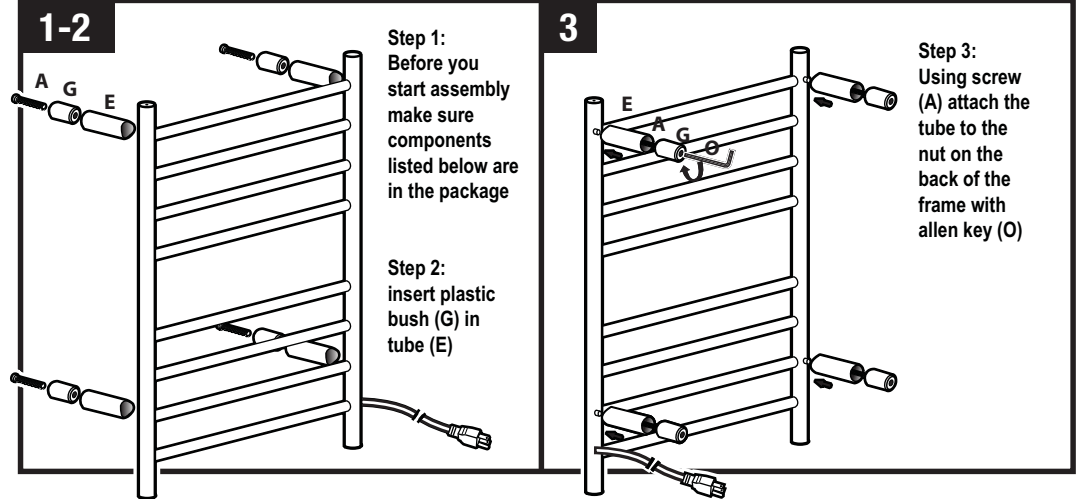


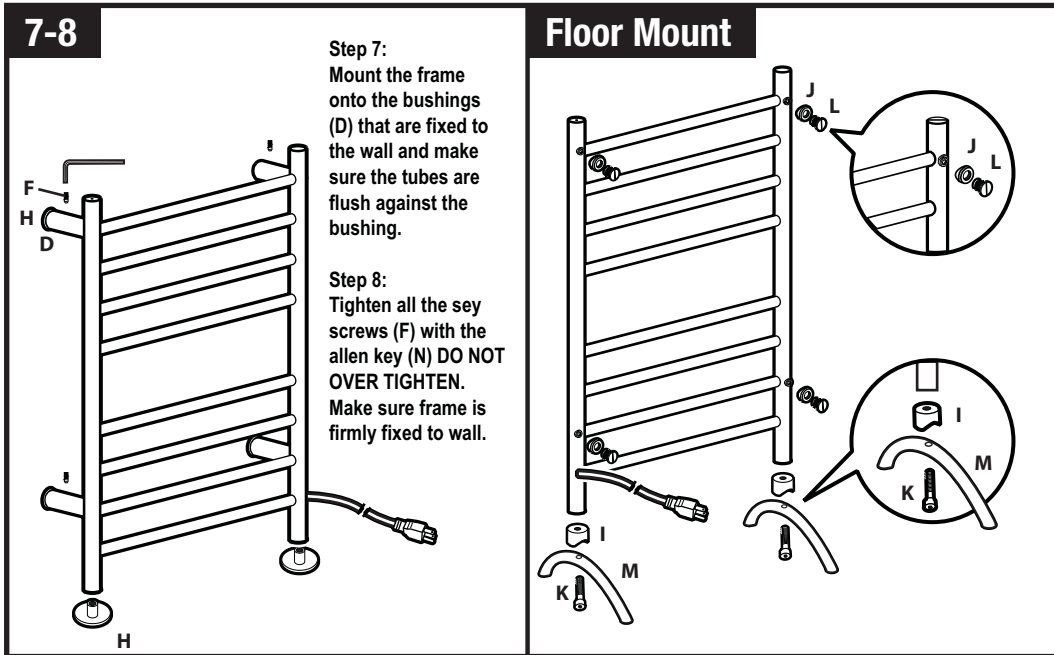
INSTALLATION INSTRUCTIONS

- Review instructions carefully before installation
- Installation should be completed by a qualified person
- Please dispose of packaging in a responsible manner

PARTS LIST

A M8x65 4x	B 4x	C ST4.2*40 4x	D 4x	E 4x
F M6*10 4x	G 4x	H 4x	I 4x	J 4x
K 1x	L 1x	M 2x	N 1x	O 1x





After installation is complete, connect the electric power and turn on the Power Switch. The unit will begin to heat. If the unit will not be used for an extended time, simply turn the unit off using the power switch.

Voltage 110VAC Rated Frequency: 60Hz
Power Rating: 120W

1. Do not hook the unit up to a circuit until completely reading these instructions.
2. This product is intended only for domestic use. Do not put the unit into water. Do not use in a sauna, shower cubicle or steam room. This product is for indoor use only.
3. If the heating wire inside the unit fails or becomes damaged, turn the unit OFF and contact WarmlyYours. Do NOT attempt to repair or remove the power switch or heating wire.
4. If you encounter any difficulties while installing your Towel Warmer, installation support is available by phone, 24/7 at (800) 875-5285.
5. If a return is necessary, please use original packaging if possible.