

WarmlyYours Towel Warmers Performance Report

INTRODUCTION

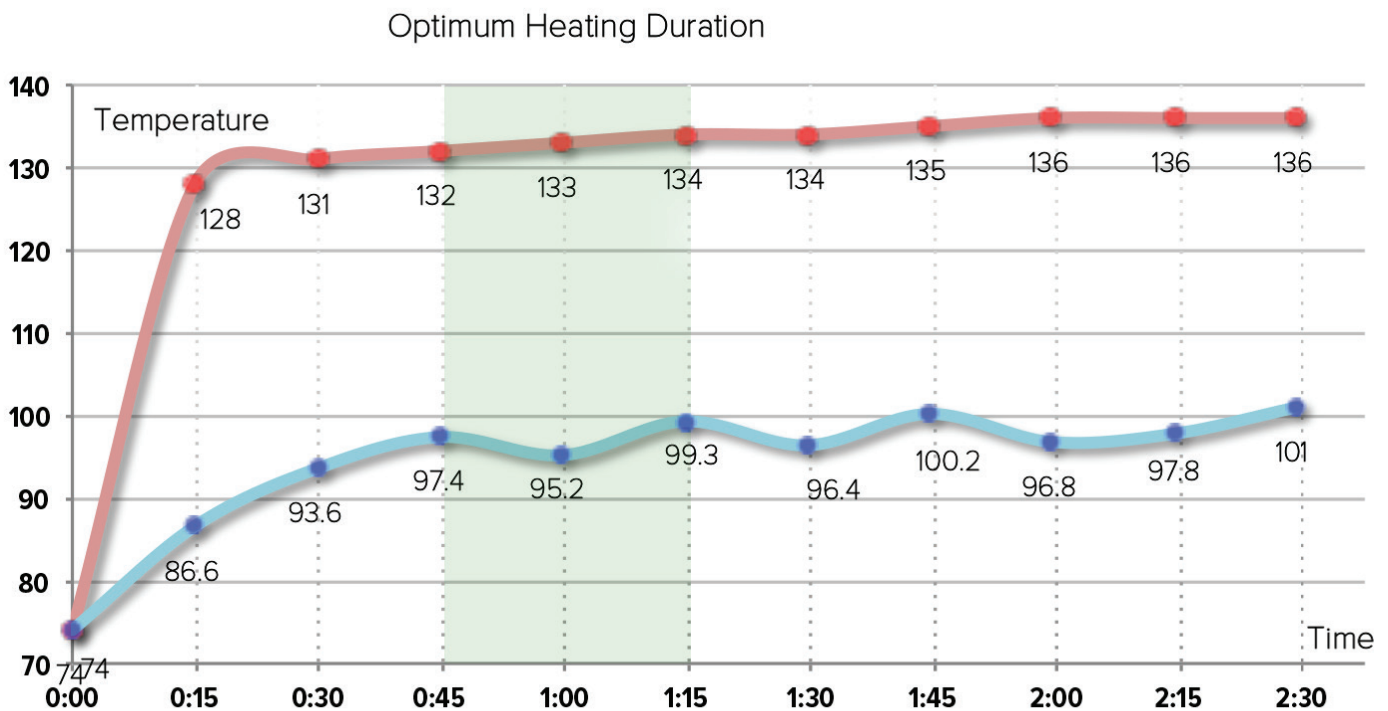
Imagine stepping out of a shower or bath to find freshly-warmed towels waiting for you on stylish warming racks. Available in several different styles and sizes, the heated towel warmers from WarmlyYours provide a sleek yet functional design that makes a key addition to any bathroom.

Our towel warmers are available in both hardwired and plug-in models, which allows for ultimate installation flexibility. Our hardwired models connect to a 120V circuit and include a programmable timer, while our plug-in models simply plug into a standard household outlet.

TEST 1: TOWEL WARMER AND TOWEL TEMPERATURE INCREASE

The Barcelona Towel Warmer was tested with a 100% cotton towel.

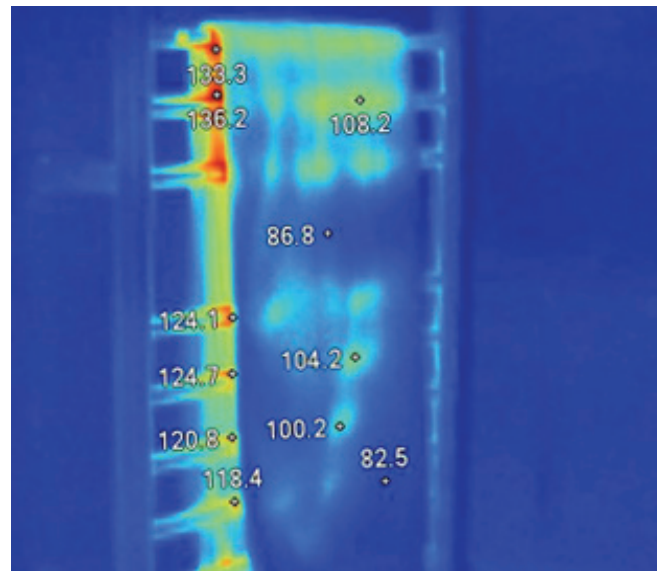
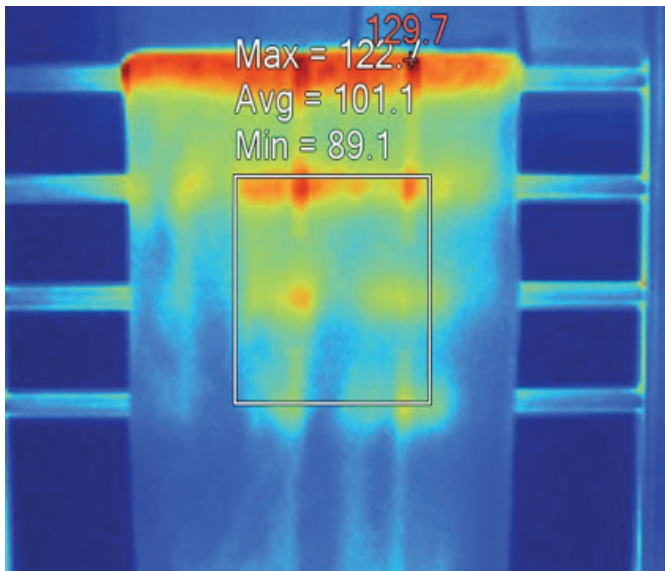
Time segments, where the average temperature of the towel warmer increases, are shown in red. The time segments, where the temperature of the towel itself increases, are shown in blue. This chart indicates that the Barcelona's temperature leveled out between 45-60 minutes into the experiment and then began to rise and fall in relation to external stimulus (air conditioning) present in the room. This indicates that the maximum average temperature for this towel was between 97 and 101 degrees Fahrenheit.



WarmlyYours Towel Warmers Performance Report

TEST 2: TOWEL TEMPERATURE VARIATION

From these thermal images, it is clear that the upper portion of the towel got about 10 degrees warmer than the bottom area. This is because the top portion of the towel was in much closer proximity to the heating elements than the lower portion. The towel that was tested had a recessed design element and the hottest spots shown in the pictures represent this thinner area of the towel where heat was escaping.



Here is the temperature pattern on a non-folded towel, placed over the Infinity Towel Warmer.

