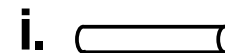
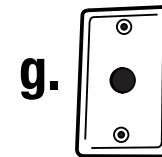
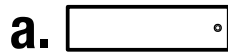


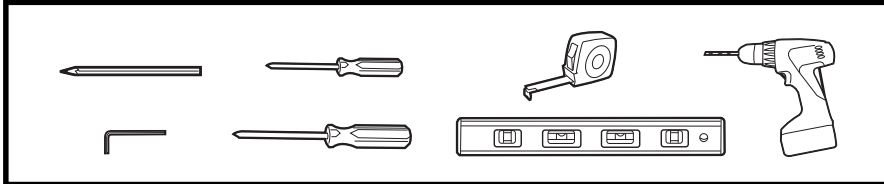
SIERRA PARTS LIST

ITEM	PART#	DESCRIPTION	QUANTITY
a.	0005-58120-0000	Tube standoff, mounting, square, stainless SM	4
b.	0005-51220-0000	Screw, set, M5/6, socket	4
c.	0005-58200-0000	Screw, cross, pan head, M5*12	4
d.	0005-57500-0001	Anchor, drywall	4
e.	0005-58120-0001	Bracket, wall mount	4
f.	0005-51200-0000	Screw, cross, countersunk, 2*40	4
g.	0005-51820-0000	Wallplate, stainless, with grommet and ground	1
h.	0005-51200-0001	Screw wallplate, stainless 6/32	2
i.	0005-58820-0000	Tube, stainless, round, electrical	1
j.	0005-51900-0000	Wrench, hex, 2.5	1
n/a	AK05-58020-0000	Parts kit assembly, SM	1



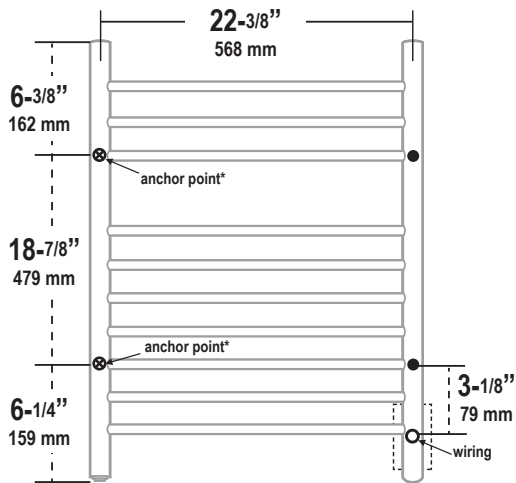
TOOLS REQUIRED







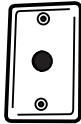
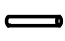
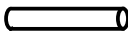
1-2.

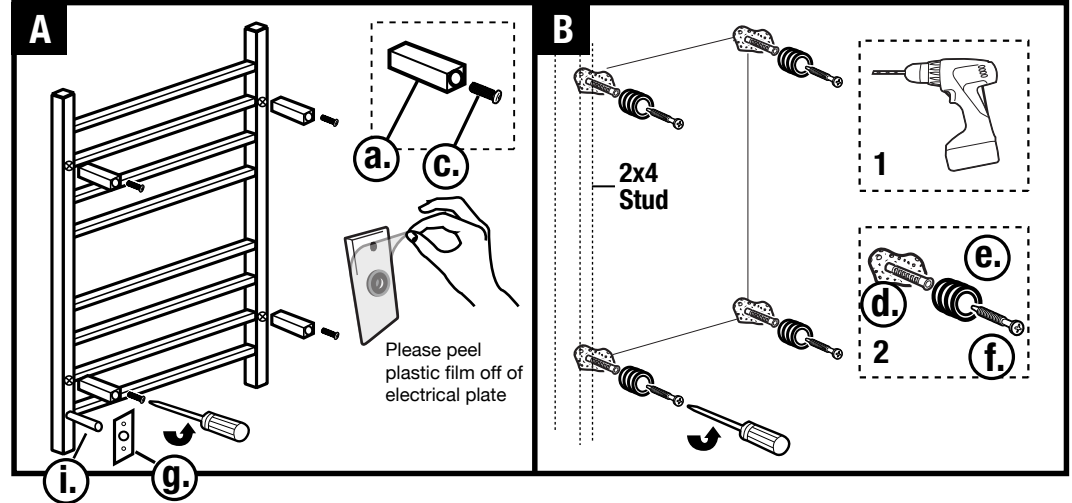


INSTALLATION INSTRUCTIONS

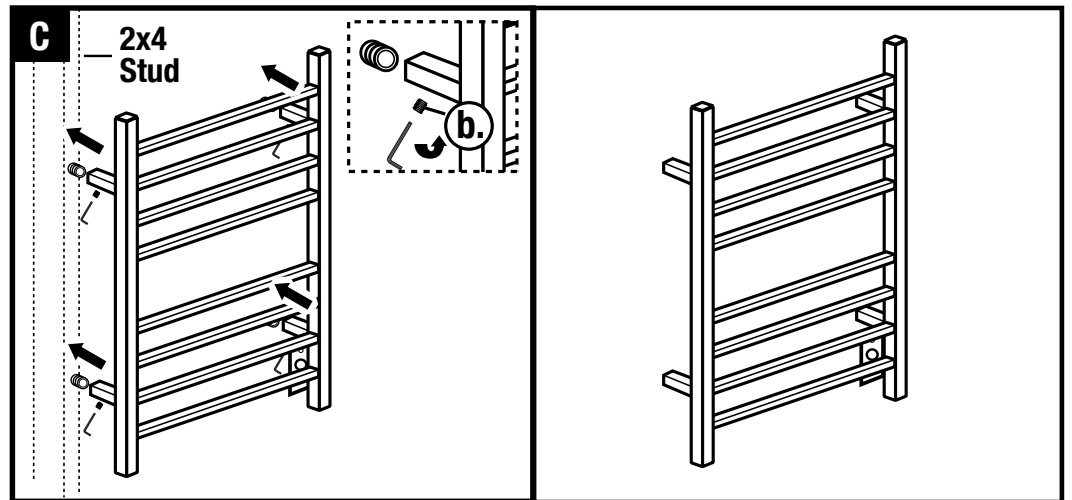
- Review instructions carefully before installation
- Installation should be completed by a qualified person
- Please dispose of packaging in a responsible manner

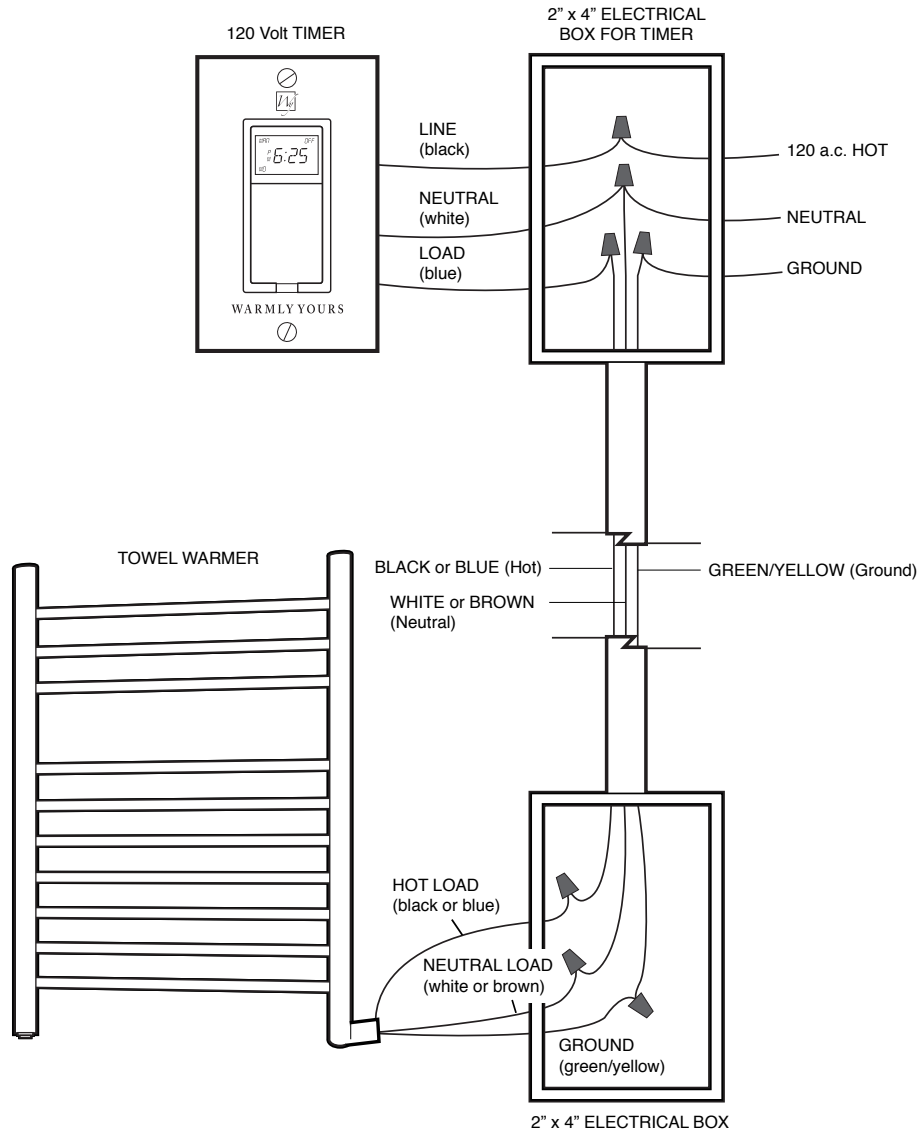


- a.  4 PCS
- b.  4 PCS
- c.  4 PCS
- d.  4 PCS
- e.  4 PCS
- f.  4 PCS
- g.  1 PCS
- h.  2 PCS
- i.  1 PCS



2-2.





TIMER INFORMATION:

Towel Warmers are designed to warm towels only and should WarmlyYours Towel Warmers include our programmable timer for luxurious and economical use of the Towel Warmer.

On

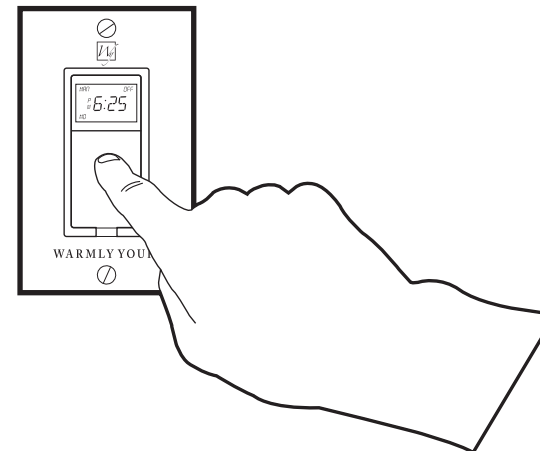
Towel Warmer runs at 100% power and will reach temperatures between 100° F and 140° F depending on the following: running time, number of towels, type of towels and ambient room temperature. For optimal use we recommend Automatic Mode.

Automatic Mode

Programmable Timer allows up to 14 events or Two ON-OFF cycles per day. Easy programming allows you to set intervals of operation for each day of the week. To access programming controls flip the switch panel up. Reference Diagram G for switch location.

Manual Mode

Timer can be set to operate in manual mode to function as a simple ON-OFF switch.



After installation is complete, connect the electric power and turn on the Power Switch, located on the bottom left of the unit. The unit will begin to heat. If the unit will not be used for an extended time, simply turn the unit off using the power switch.

1. Do not hook the unit up to a circuit until completely reading these instructions.
2. We recommend mounting the left vertical rail mounts to a stud.
3. This product is intended only for domestic use. Do not put the unit into water. Do not use in a sauna, shower cubicle or steam room. This product is for indoor use only.
4. If the heating wire inside the unit fails or becomes damaged, turn the unit OFF and contact WarmlyYours. Do NOT attempt to repair or remove the power switch or heating wire.
5. If you encounter any difficulties while installing your Towel Warmer, installation support is available by phone, 24/7 at (800) 875-5285.
5. If a return is necessary, please use original packaging if possible.

SAFETY INFORMATION

- Towel Warmers are designed to warm towels only and should not be used for any other purpose.
- Never stand, sit on or hang on the Towel Warmer unit.
- Never allow children to play on or with the Towel Warmer.
- Make sure that the electrical circuit breaker is shut off at the main panel before wiring or servicing your Towel Warmer.
- The Towel Warmer must be properly grounded.
- All wiring must be in accordance with the National Electrical Code (NEC) and Canadian Electrical Code (CEC) and should be performed by a licensed professional who is certified to do electrical wiring.
- Never place your Towel Warmer inside a shower, sauna or steam room.
- Never attempt to warm more than two (2) towels on the Towel Warmer at a time. Overloading the Towel Warmer will cause the unit to become extremely hot and may result in a burn if touched.
- Towel Warmers are cULus listed for use in US and Canadian markets.

CLEANING INFORMATION

Clean the Towel Warmer with a soft, non-abrasive, damp cloth while warm. Once the Towel Warmer has cooled, lightly polish with a soft dry cloth. Do not use abrasive cleaning powders, metal polish or chlorine based cleaners on any part of the Towel Warmer.

INSTALLATION

This appliance must be installed in accordance with the instructions in the manual and the NEC and CEC guidelines relating to electrical fixtures in bathrooms. The Towel Warmer must be on a GFCI protected circuit and be wired by a professional who is certified to do electrical wiring.